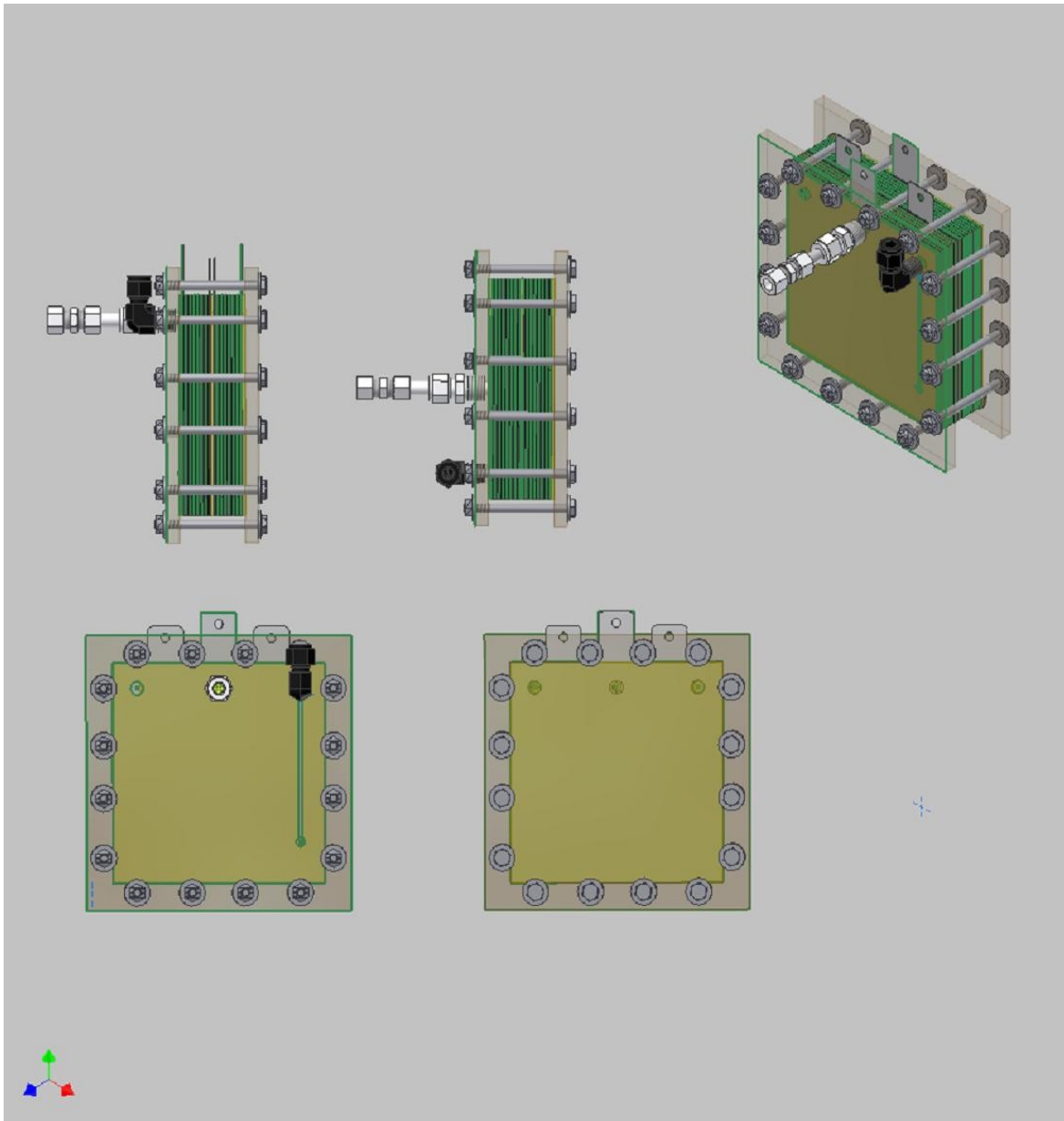


The BB Smack Cell

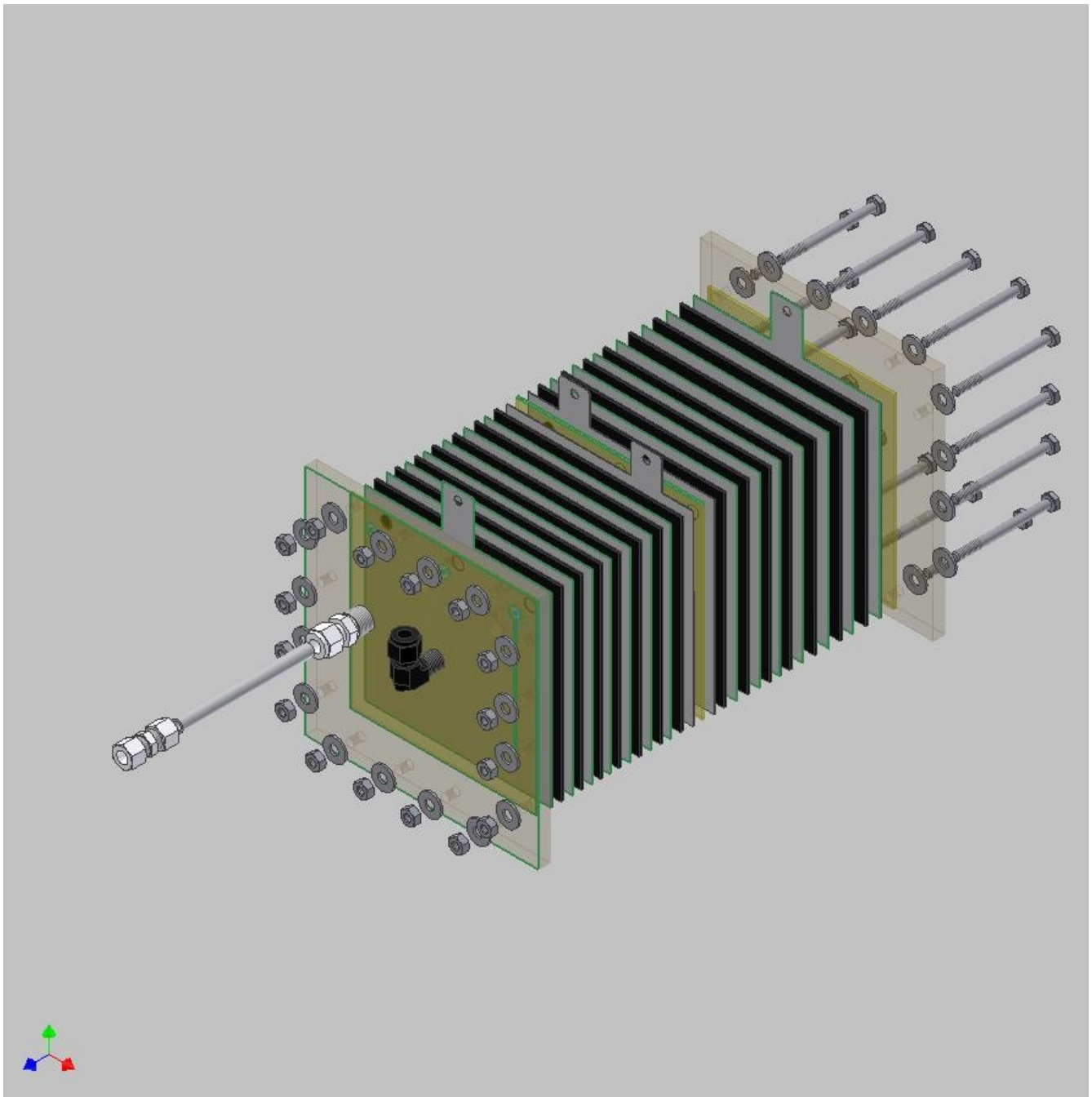
The drawings in the following Document is to aid the builder in the creation of a very efficient cell. Mr. Smack has done a eloquent job of presenting the Hydrogen Boost technology to the public thru the Internet and I personally have to commend him for this work. When I reviewed the cell design I saw at the beginning that this cell is one of the most efficient designs currently available in the art. I felt that this being the case, I would develop a set of drawings to assist the replicator of this user friendly built device an avenue to do so.

Bill V. Williams, PE, ME

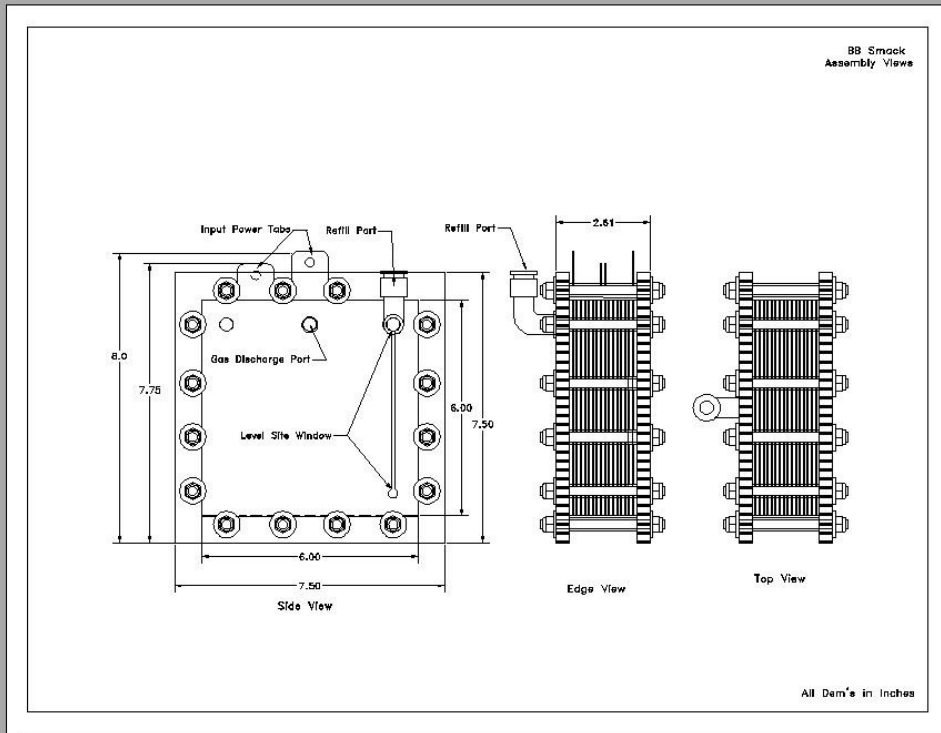
Drawings:



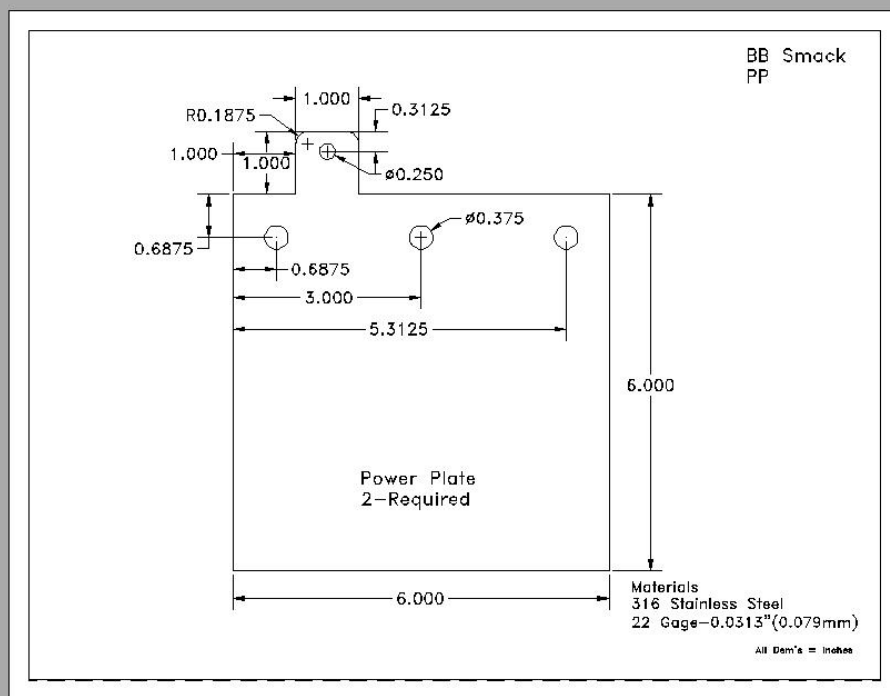
Views of the Cell



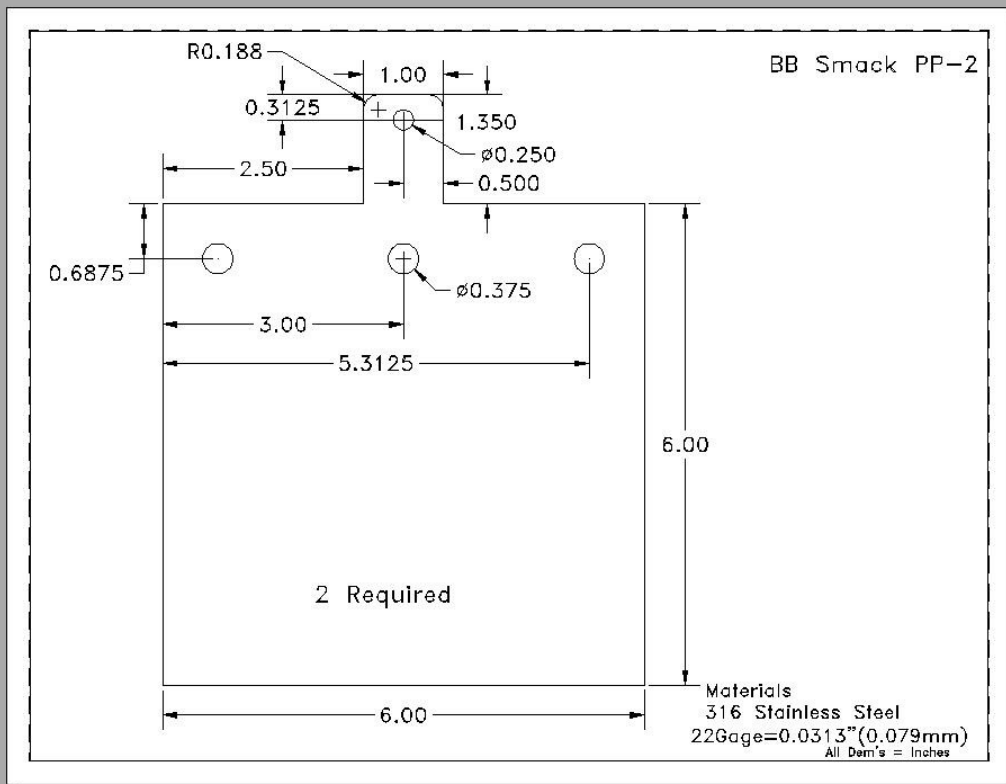
Exploded View



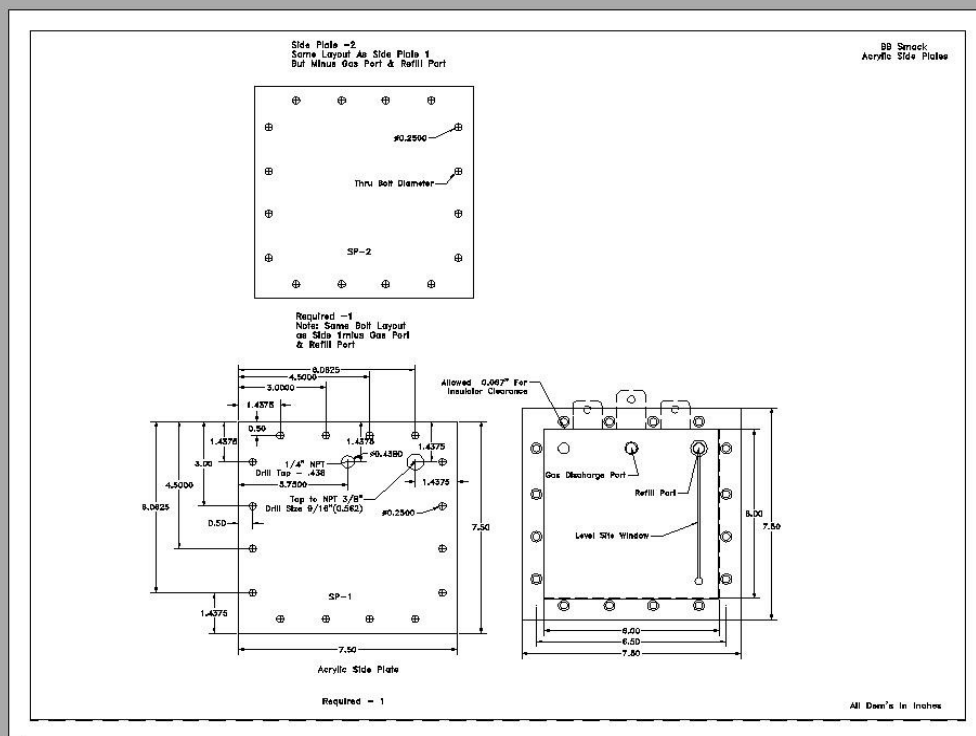
Assembly Views



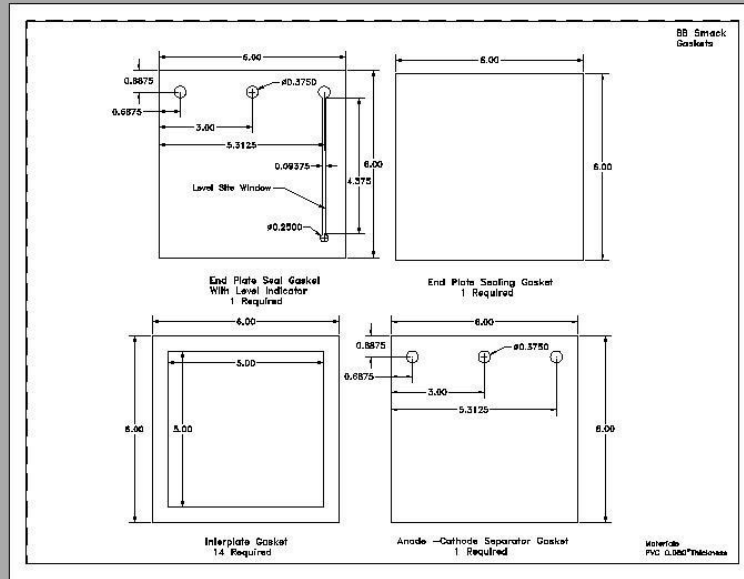
Power Plate Dwg



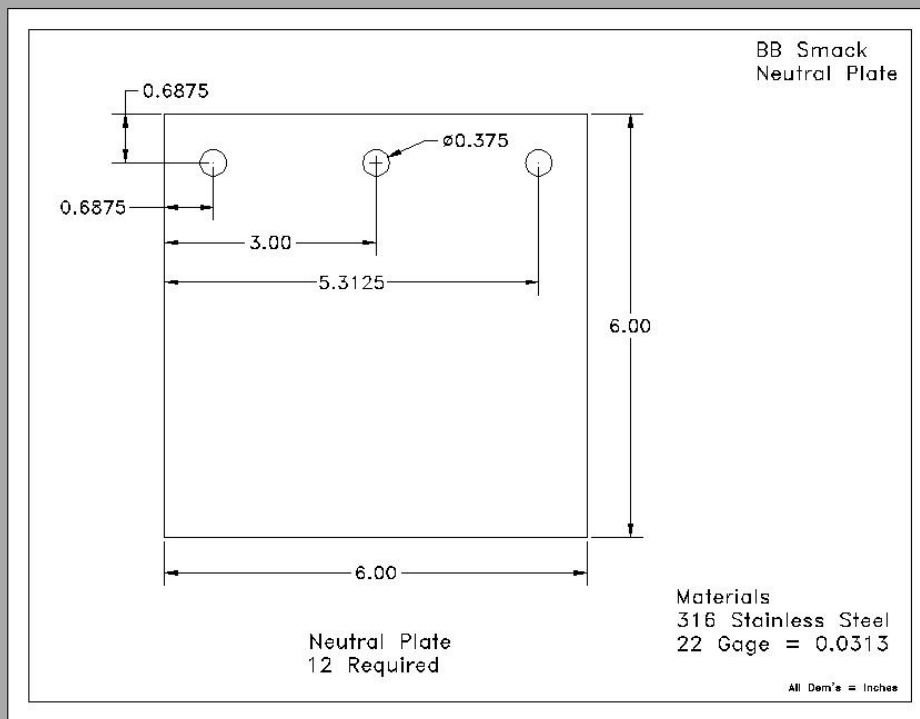
Power Plate-2 Dwg



Side Plate Dwg



Gasket Dwg's



**For further Information relating to the BB Smack Cell, please click the following.
BTW: Mr. Smack recommends that you want to learn more check out the Links below.**

Check out my fuel savings device by clicking here!

OR

<http://www.youtube.com/user/EletrikRide>